

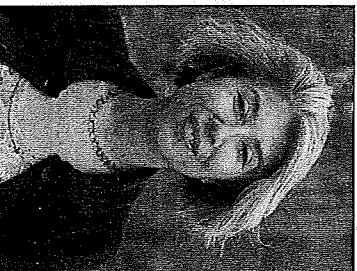
COMMUNITY

Nikkei Serving on Board For Chinatown/International District

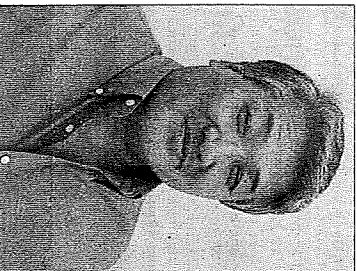
By The North American Post Staff



Sharon Tomiko Santos



Mako Winkler-Chin



Phil Fuji



Elaine Ikoma Ko

Three Nikkei leaders are serving on a board established through the leadership of State Representative Sharon Tomiko Santos to protect the Chinatown/International District and Pioneer Square neighborhoods.

The three individuals currently serving on the Historic South Downtown (HSD) Board are Phil Fuji, Elaine Ikoma Ko, and Mako Winkler-Chin.

The HSD was established in 2008 by the State Legislature to address the impacts of the sports stadia and exhibition centers built in the two neighborhoods. Established as a State community development and preservation authority, the Board represents members from both neighborhoods.

"HSD is working hard to help build and protect the economic and cultural vibrancy of our neighborhoods," Ko states. "Even with construction cranes everywhere, we want to make sure that the type of development will support, not destroy, the unique historical character and the diversity of

businesses and residents here."

State Representative Sharon Tomiko Santos (D-37th District) was the driving force behind its formation working with community members on its concept and adoption, and she has since spent years working to secure adequate funding that will help the two urban neighborhoods thrive.

Recently, Governor Inslee signed House Bill #1223 that authorized King County to issue a total of \$45 million in revenue bonds for affordable housing. The bill also authorized at least 10% or \$4.5 million to finance projects to promote "sustainable workplace opportunities" near a community impacted by the construction or operation of tourism-related facilities.

HSD would receive these funds to be distributed to the two communities. The larger \$45 million in bonds are part of the county's hotel-motel tax.

Representative Santos noted: "This is a very significant step forward in recognizing the importance of the two neighborhoods having access to a dedicated stream of funding. It

is also the recognition that these two neighborhood communities have the : found at www.historicsouthdowntown.org.

More information on HSD can l